



FOR SALE



SD90

SANLORENZO

BOATSTERS BLACK

**SANLORENZO**

**SD90**

## Where the Sea Becomes Home

---

The Sanlorenzo SD90 redefines what it means to live on the water. Born from the visionary collaboration between Sanlorenzo's naval architects and celebrated interior designers, this 27-metre displacement explorer embodies a quiet confidence that doesn't need to announce itself, because every detail speaks for itself.

Step aboard, and the boundaries between yacht and private residence dissolve. The SD90's generous beam and low centre of gravity deliver exceptional stability, while her hull glides with a composure befitting the finest addresses on land. Inside, natural light floods through panoramic glazing, illuminating living spaces conceived with the warmth of a curated home rather than the conventions of a vessel.

# A VISION REDEFINED

---

When Sanlorenzo conceived the SD line, it reimagined what a displacement yacht could be not merely a vessel built for passage, but a floating architecture that belongs equally to the sea and to the world of great design. The SD90 is the clearest expression of this ambition.

Her silhouette is low, elongated, and resolved with absolute confidence. Presence is earned through structure the geometric precision of the superstructure, the considered rhythm of the windows, the balance between solid surfaces and open space.

Inside, spaces unfold in sequence, each proportioned to feel generous without excess. Natural materials, engineered surfaces, and modulated light come together with the coherence of a design that looks as resolved at anchor as it does underway.





## DESIGNED TO LIVE IN

---

The interior of the SD90 is the work of Patricia Urquiola, a collaboration where sustainability and transformability become design principles rather than constraints.

Eco-conscious materials, bio-resins, recycled glass, and Paper Factor wood panelling define the tactile experience throughout. Every surface is chosen for honesty as much as finish.

Layouts shift fluidly between lounge and private configurations, while large windows and seamless indoor-outdoor flooring dissolve the boundary between interior and sea, making openness not a feature, but a way of living.

# THE ART OF INTENTION

---

The SD90 is not defined by size, but by intention. Every decision from the resolution of the hull to the sequencing of interior spaces reflects a design culture that values coherence over spectacle, and quality over abundance.

She is a yacht conceived for those who travel with discernment: who understand the difference between presence and noise, between craftsmanship and decoration.

Her lines do not seek attention they command it, quietly and without effort.

Built to move through the world with purpose, the SD90 arrives wherever she goes with the same conviction she was designed with.



# GENERAL

---

## MAIN

Brand	<b>Sanlorenzo</b>
Type	<b>SD90</b>
Year built	<b>2025</b>

## ACCOMMODATION

Cabins	<b>4+2</b>
Beds	<b>8+4</b>

## DIMENSIONS

Length	<b>27.43m</b>
Beam	<b>7m</b>
Draught	<b>1.9m</b>

## SPEED & RANGE

Cruising speed	<b>13Kn</b>
Maximum speed	<b>17Kn</b>
Economical speed	<b>10kn</b>

# GENERAL

---

## CONSTRUCTION

Builder	<b>Sanlorenzo S.P.A.</b>
Hull material	<b>GRP</b>
Hull type	<b>Semi-Displacement</b>
Superstructure material	<b>GRP</b>
Deck material	<b>Teak</b>
Classification	<b>RINA CE</b>

## TANK CAPACITIES

Fuel	<b>13000l</b>
Water	<b>2000l</b>
Grey Water	<b>1000l</b>

# ENGINES & TECHNICAL

---

## ENGINES & PROPULSION

Main Engines	<b>2x MAN V8</b>
Engine power	<b>1200</b>
Engine Hours at date	<b>90</b>
Propulsion	<b>Shaft</b>

## ELECTRICAL SYSTEM

Main Generators	<b>Kohler</b>
-----------------	---------------

# EQUIPMENT

---

## Galley & Laundry

- **Wine cooler or fridge:** Winecooler 23 bottles on main deck
- **Microwave:** Cooktop Miele KM 7474 FL 80 cm in galley
- **Icemaker:** N.2 Fridge/Freezer Miele KF 7772 B in galley - diff. from standard

## Audio / Video

- **Televisions:** 55 Main Salon

## Navigation & Communication

- **Chart plotter:** Simrad
- **Auto pilot:** Simrad

## Equipment

- **Bow thruster:** Yes
- **Stern thruster:** Yes
- **Airconditioning:** Tropical 150000 btu/h
- **Watermaker:** Water maker Idromar 250 l/h

## Deck Equipment

- **Garage:** Yes
- **Passarelle/Gangway:** Yes
- **Swimming ladder:** Yes

# EXTRA EQUIPMENT

---

## Electrical appliances

- Additional waterproof socket 220V — ×1 in garage, ×1 next to helm station on fly, ×1 inside the bar on fly
- Simrad Diamond package

## Alarms and controls

- CCTV IP Panasonic with DVR — ×2 fixed in cockpit, ×1 pan & tilt + ×2 fixed in engine room
- Additional 12" touch screen monitor (ship monitoring system) in crew area
- Monitoring system for propulsion and main navigation systems
- Additional fixed 3rd control station

## Satellite & communication systems (TV SAT)

- TV-sat antenna KVH TV6
- Empty radome KVH TV6

# EXTRA EQUIPMENT

---

## Household Appliances

- Cooktop Miele KM 7474 FL 80 cm in galley
- Hood Miele DAS 4920 90 cm in galley
- x2 Fridge/freezer Miele KF 7772 B in galley
- Wine cooler 23 bottles on main deck

## Audio / Video Appliances

- Stopsol glass for TV cabinets in owners', VIP, and guests' cabins
- Diamond audio/video package
- 5G Wi-Fi system with harbour hot spot antenna
- 65" TV in salon with ceiling lift system
- Predisposition for x1 Starlink antenna

# EXTRA EQUIPMENT

---

## Interior Accesories

- Bed frame opening system with pistons (under-bed storage) in x2 guest cabins and owner's cabin
- Sliding bed for VIP cabin
- Electrical decorative fabric curtains — x3 in salon (boxes, side guides, electrification + remote controls)
- Manual blackout curtains — x1 per guest cabin, x1 in VIP cabin (total x3)
- x2 TV furniture cabinets in guest cabin in wood (stopsol not included)
- Cadorin parquet "Teak brushed painted crude effect OPH5 with insert in dove gray maple" in salon, owner's cabin, galley and daily bathroom — with pattern and stair steps
- Curved and circular corners in oak for stair steps
- Full-height boiserie in Dedar Eero fabric for walls in owner's, VIP and guest's cabins
- Bronze lacquered linear profiles for Urquiola design details in cabins, salon and bathrooms
- Bronze lacquered frame for all swing doors (x6 total) and sliding door in owner's cabin
- Ribbed wood throughout the boat (with burnished metal door handles): entrance cabinet on starboard side in salon, cabinet door facing daily bathroom, wall of daily bathroom, bow side walls (incl. doors) in salon, lower deck staircase walls, walls and cabinet in owner's cabin
- Metal net and handrail in bronze finish for lower deck staircase
- Bow cabinet doors in Millerighe Madras bronze mirror
- Custom mini bar with fridge and shelves, hard leather top, oak structure and canneted oak sides
- Up/down table with matt marble top and circular ribbed wood base in salon
- Custom rounded bedside tables in all cabins in canneted oak with hard leather top
- Headboard with piping and curved shape in all cabins

# EXTRA EQUIPMENT

---

## Interior Accesories

- Foldable vanity in VIP cabin with ribbed wood front, bronze lacquered top and custom handle
- Olivari Conca handles throughout the boat (except crew) in DS super satin bronze finish
- Palagi sockets throughout the boat (except crew) in brushed bronze finish
- Countertop and splashback in bone Corian finish
- Custom marble cabinet layout for daily bathroom with wash cabinet, integrated sink, niche and splashback
- Marble walls: all shower walls + x2 toilet area walls in owner's; x1 shower wall + x1 toilet area wall in VIP and guest's cabins (total x12)
- Ribbed glass for curved wall above sinks in all bathrooms
- Custom rounded bathroom cabinet in owner's cabin in marble with ribbed front and x2 integrated sinks under marble top with drawers
- Custom rounded bathroom cabinet in VIP and guest cabins in marble with x3 integrated sinks under marble top with ribbed marble fronts
- Bronze lacquered frame with custom door handle for sliding door in guest and VIP cabins (x3 total)
- All WC and shower doors in ribbed glass with bronze frame, anti-roll shower and Logli bronze door handle
- x6 CEA FRE54 countertop and MIL01 single lever mixer faucets in all bathrooms and shower mixer group
- CEA bathroom accessories in satin bronze finish
- Rain shower CEA FRE35 ZS in all bathrooms
- x5 CEA PLA22ZS hydro shower in bronze finish
- Concealed WC flush button in all bathrooms

# EXTRA EQUIPMENT

---

## Interior Accesories

- Sliding mirror in owner's cabin to conceal the door in front of wardrobe with integrated LED strip
- Extra clear fixed glass handrail in owner's bathroom
- Ribbed glass wall between shower and toilet area in owner's bathroom
- Warli SP Rug, custom pattern, 100% linen handtufted Urquiola "doghe" design — 235×545 cm in salon
- Warli SP Dots custom rug, dot color BM05 / ground color AB12-AH11 — 190×260 cm in owner's cabin
- ×1 Coffee table Cassina Sengu 557\_50 ø50 cm h.50 cm, black stained oak top & structure with white marble base in salon
- ×2 Minotti Horizonte sofas (one linear + one corner) in fabric with leather base in salon
- ×2 Minotti Tape with fixed base in fabric in salon
- ×1 Coffee table Miniforms Soda ø55 cm h.30 cm in oil blown glass finish in salon
- ×1 Coffee table Miniforms Soda ø38 cm h.45 cm in oil blown glass finish in salon
- ×2 Cassina Soft Corners poufs in salon

# EXTRA EQUIPMENT

---

## Interior Accesories

- x1 Cassina dining chair Dudet 562 in fabric in owner's cabin
- x1 Poltrona Frau Lepù
- Foresti & Suardi spotlights, LED strips and wall lights for cabins
- LED strip under bed in owner's and guest's cabins, and under bedside table in owner's cabin
- x2 Custom Flos reading lights in bronze finish in owner's cabin + x6 Cassina Shadowmoon 089 reading lights in lower cabins
- x6 Flos Flaute Spiga decorative lamps in lower deck cabins
- x4 Folio Giro decorative ceiling lamps ø600 mm in all bathrooms
- x1 Decorative table lamp (to be defined)

# EXTRA EQUIPMENT

---

## Exterior Accesories

- Cockpit summer cover (stern area only)
- Sun awning for bow area
- Foot switch for anchor windlass
- Foot switch for capstan with reverse option
- Predisposition for backlit boat name letters
- ×4 Underwater LED lights (×2 on aft transom + ×1 on each hull side aft)
- Lateral door in main deck salon on port side
- Teak floor with inclined slats and black rubber in bow area including stair steps
- Sun awning for stern area of the fly
- Teak floor with inclined slats and black rubber on flybridge
- Kettal Mesh table ø135 cm h.35 cm in cockpit (cover included)
- ×2 Kettal Band Club teak armchairs in cockpit (cover included)
- Kettal Mesh dining table ø180 cm h.72 cm on flybridge (cover included)
- ×8 Kettal Roll dining chairs in fabric on flybridge (cover included)
- ×3 Kettal Mesh double sunbeds in fabric on flybridge (cover included)
- ×3 Kettal Object coffee tables on flybridge — ×1 in 16C rose canyon, ×2 in 14T terracotta (cover included)

# EXTRA EQUIPMENT

---

## **Thruster & Stabilizers**

- Electric stern thruster

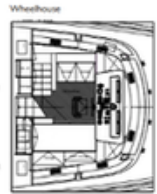
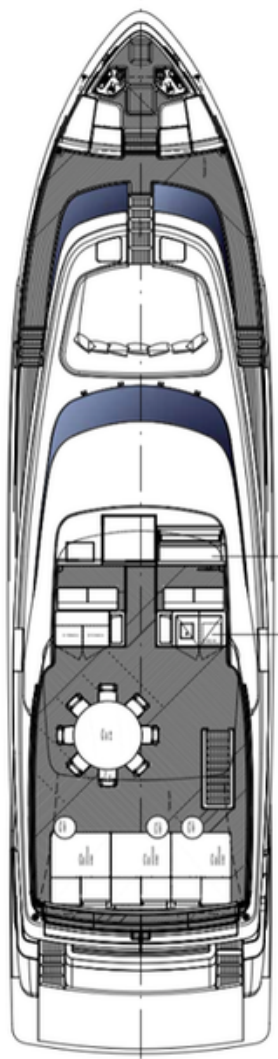
## **Engine Room Equipment**

- Water maker Idromar 250 l/h
- Active carbon purification filter for fresh water system
- Boiler 160 liters
- Tropical air conditioning
- x2 Kohler generators 35 kW

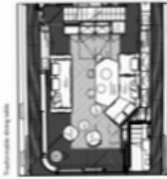
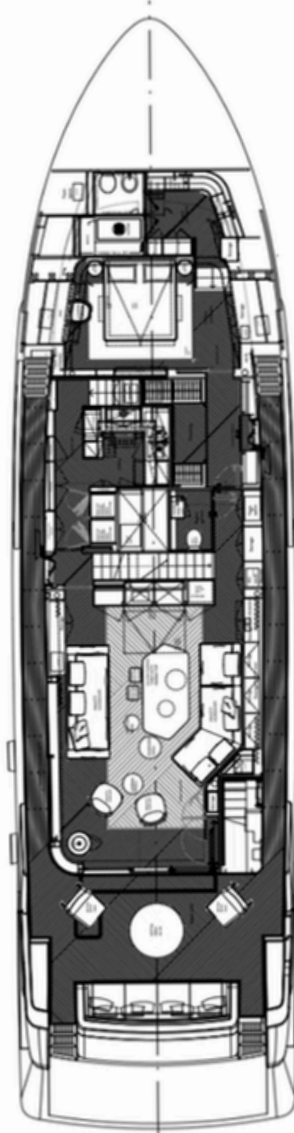
# GENERAL ARRANGEMENT

---

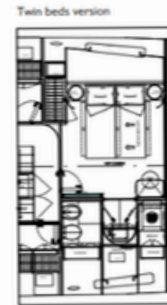
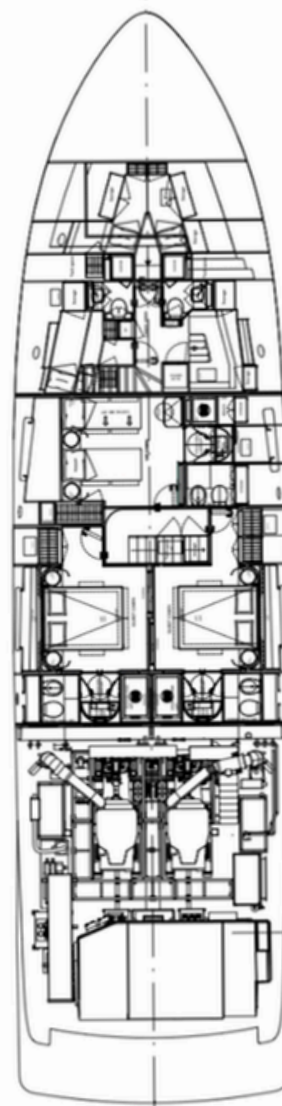




Flybridge



Main deck



Lower deck































BOATSTERS BLACK

 @boatstersblack

 /boatstersblack

 @boatstersblack


 /BoatstersOfficial


[boatstersblack.com](http://boatstersblack.com)

 **Spain (HQ)**  
Club de Mar-Mallorca, s/n, Muelle  
Pelaires, 07015 Palma,  
Balearic Islands  
+34 871 180 020

 **The Netherlands**  
Herengracht 420, 1017 BZ,  
Amsterdam  
+31 (20) 261 57 95

 **France**  
Antibes  
+33 627 278 622

 **Belgium**  
Zeedijk-Het Zoute 780, 8300,  
Knokke-Heist  
+32 475 259 231

 **Dubai**  
Tanzanite 1004, Tiara Residence,  
Palm Jumeirah, Dubai, UAE  
+971 55 286 0031

 **Portugal**  
Praça Duque de Saldanha 1  
2ºandar, 1050-094 Lisboa  
+351 910 418 447